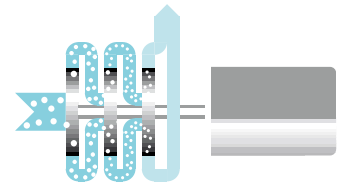


NHE



Liquefied Gas NHE LBE

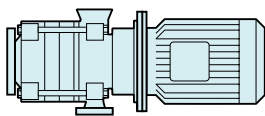
Advantages

Liquefied gas pumps are required for unloading, fuel transfer, filling and fueling processes. There are high requirements: low NPSH values, low level of pulsations transport, mixture transport, high pressure differences, low noise emissions and ATEX conformity.

The user, besides the reliable transport of liquid-gas mixtures, also expects the control of outgassing and variations of the steam pressure and more and more popular higher pump efficiencies.

The high pump efficiencies lead to low energy consumption, smaller drive assembly and to relatively compact pumps units.

Other types:



LBE

■ High Energy-Efficiency

- very high efficiencies
- optimized impeller approach flow

■ Technical Superiority

- open impellers without axial thrust or balanced closed impellers
- compensation of radial forces by means of diffuser devices in the annular casing
- single- or double acting mechanical seals and magnetic coupling optional
- NPSH inducer stages
- ATEX conformity

■ Process Reliability

- partial gas supply
- wide performance curve characteristics
- low NPSH-values

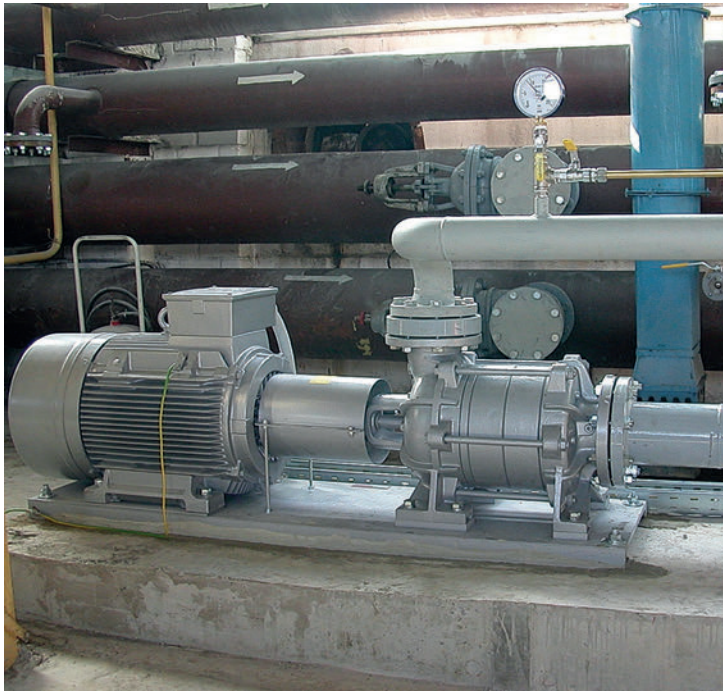
■ Easy Installation

- modular construction for customized solutions
- compact bloc- or bedplate design

■ Application

- operating pressure up to 40 bar
- temperature -40°C to $+110^{\circ}\text{C}$
- viscosity up to $115\text{ mm}^2/\text{s}$





liquefied petroleum gas
 special solutions
 tank vehicles
 cooling plants
 liquefied gas systems
 filling stations



Liquefied Gas
 NHE LBE

Characteristics

