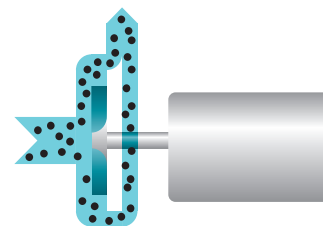




FUB



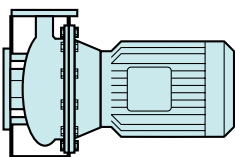
## Torque-Flow-Bloc FUB CBF

## Advantages

A torque-flow pump in compact bloc-design for the transport of liquids contaminated with solids or suspensions. Typical liquids are: waste water, cooling agents contaminated with metal chips, abrasive oils and lyes, lime milk and products that have to be transported with care.

Main applications include: sewage water plants, treatment systems, recycling processes, washing plants, filters, environmental and operation technique. An all-purpose pump design insensitive to cavitation conditions.

Other types:



CBF

### ■ Process Reliability

- transport of liquids with solids
- single or double-acting mechanical seals
- insensitive to cavitation conditions
- products are transported with care
- insensitive to plait and clot formation

### ■ Technical Superiority

- momentum transfer by means of recessed torque-flow-impeller
- free passages up to 80 mm diameter
- optional wear-resistant coating

### ■ Easy Installation

- optional positions of installation
- compact design

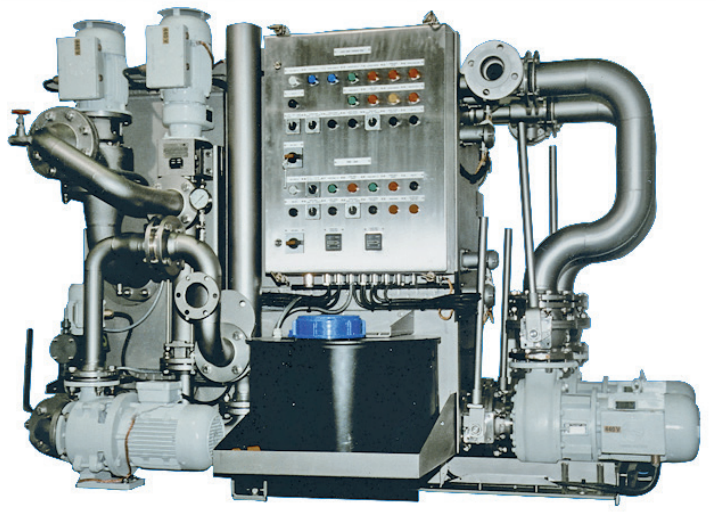
### ■ Easy Maintenance

- pull-back design
- sturdy execution

### ■ Application

- operating pressure up to 16 bar
- temperature -40° C to +180° C
- viscosity up to 60 mm<sup>2</sup>/s
- solids contents up to 15 %





handling entrained solids  
 grinding oils  
 suds wastewater  
 cooling lubricants  
 filter systems



**Torque-Flow-Bloc  
 FUB CBF**

**Characteristics**

