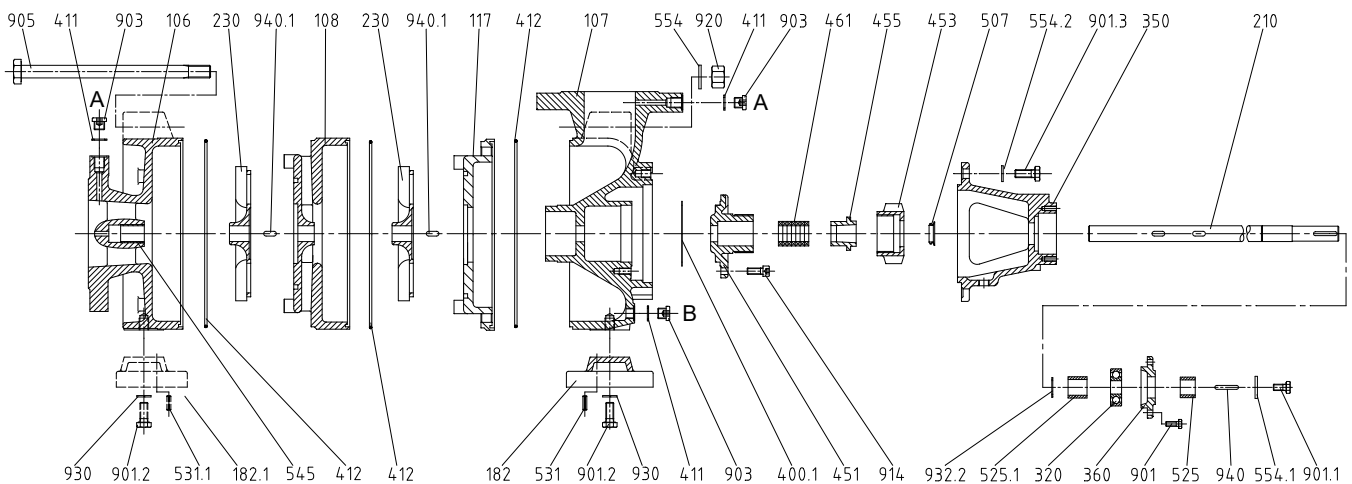
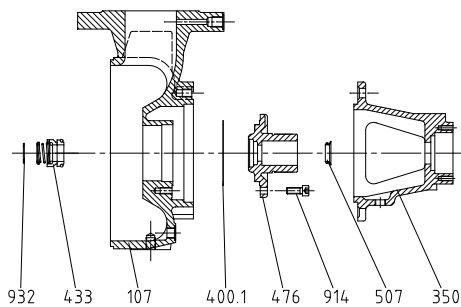


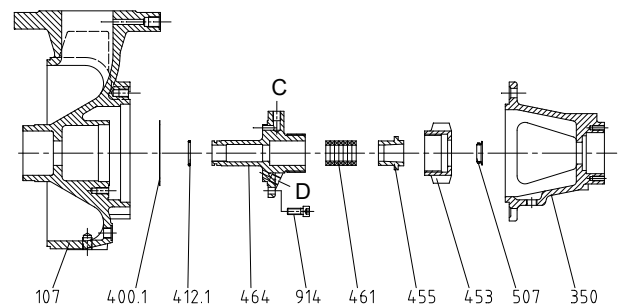
NHP



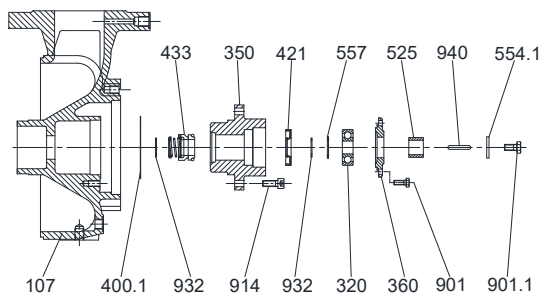
NHU/NHE, delivery side



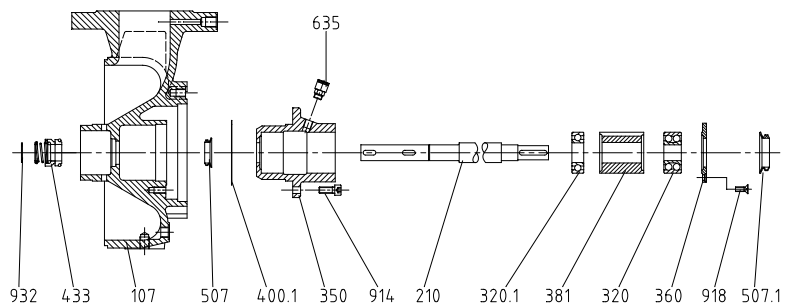
NHT, delivery side



NU/NE, delivery side



NLU, delivery side



part no.	designation	part no.	designation	part no.	designation
106	suction casing	412/.1	o ring	554/.1-2	washer
107	delivery casing	421	radial shaft seal	557	shim ring
108	stage casing	433	mechanical seal	635	grease cup
117	end stage casing	451	stuffing box housing	901/.1-3	hexagon screw
182/.1	foot	453	gland nut	903	screwed plug
210	shaft	455	stuffing box insert	905	tie bolt
230	impeller	461	gland packing	914	hexagon socket head cap screw
320/.1	ball bearing	464	stuffing box housing support to stationary element	918	slotted countersunk head screw
350	bearing housing	476	support to stationary element	920	nut
360	bearing cover	507/.1	deflector	930	tooth lock washer
381	bearing housing cartridge	525/.1	spacer sleeve	932/.1-2	circlip
400.1	gasket	531/.1	locking sleeve	940/.1	key
411	joint ring	545	bearing bush		

A: Screwed plug G1/4 for vent and manometer connection

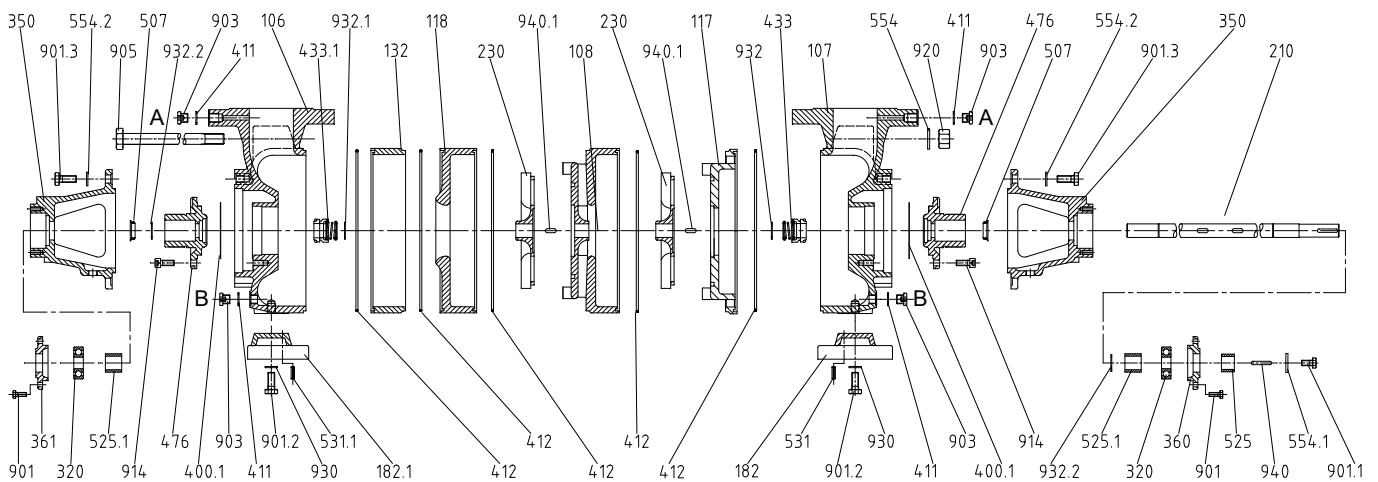
B: Screwed plug G1/4 for drain

C: Screwed plug G1/8 for vent connection and connection for stop or quench liquid

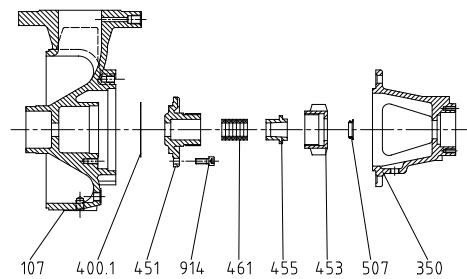
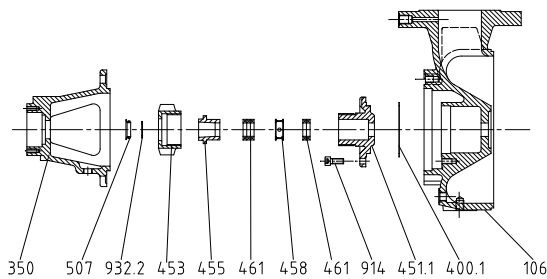
D: Connections G1/8 for stop or quench liquid

When ordering spare parts, please indicate serial no., type no. and parts no.

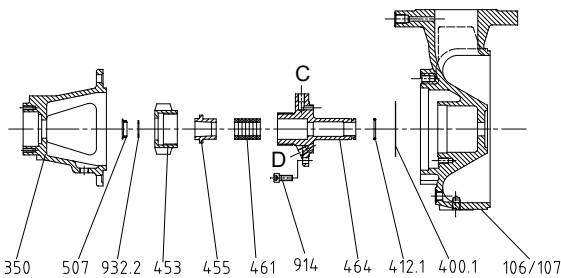
ZU, ZE



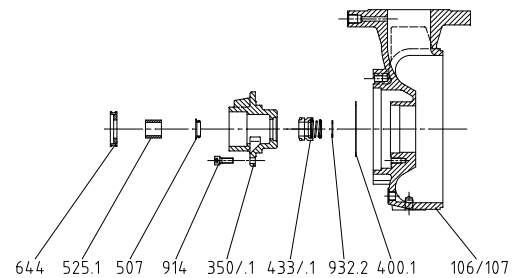
ZP, delivery and suction side



ZT, delivery and suction side



ZGE, delivery and suction side



part no. designation

106	suction casing
107	delivery casing
108	stage casing
117	end stage casing
118	suction stage casing
132	intermediate piece
182/.1	foot
210	shaft
230	impeller
320/.1	ball bearing
350	bearing housing
360	bearing cover
361	bearing end cover
400.1	gasket

part no. designation

411	joint ring
412/.1	o ring
433/.1	mechanical seal
451/.1	stuffing box housing
453	gland nut
455	stuffing box insert
458	locking ring
461	gland packing
464	stuffing box housing
476	support to stationary element
507	deflector
525/.1	spacer sleeve
531/.1	locking sleeve

part no. designation

554/.1-2	washer
644	oil ring
901/.1-3	hexagon screw
903	screwed plug
905	tie bolt
914	hexagon socket head cap screw
920	nut
930	tooth lock washer
932/.1-2	circlip
940/.1	key

A: Screwed plug G1/4 for vent and manometer connection

B: Screwed plug G1/4 for drain

C: Screwed plug G1/8 for vent connection and connection for stop or quench liquid

D: Connections G1/8 for stop or quench liquid

EDUR-Pumpenfabrik Eduard Redlien GmbH & Co. KG · Edisonstr.33 · 24145 Kiel - Germany · Telefon (0431) 68 98 -68 · FAX (0431) 68 98 -800