


# 18 Industrial Automation

## PUMP SECTOR

# The Stagnation is Over

Because of their absolute freedom from leaks and excellent operational safety, pumps with magnetic couplings are conquering new fields of application.

 The Edur pump factory is using the Hannover Messe to remind us that over 20 % of the electricity consumption within the EU is caused by pumps and to point out the firm's long-standing commitment to energy efficiency.

### Highlights of the Fair are vortex pumps

As highlights of the Fair, they are showing vortex pumps, mostly used in wastewater installations, and pumps with magnetic couplings. As Edur has observed, magnetically coupled centrifugal pumps are again conquering new fields of application after the initial euphoria in the 1990s.

According to Edur, one cause for this are the seals, for shaft bushings are usually sealed with simple slip-ring seals, with a certain inevitable leakage because of their way of working.

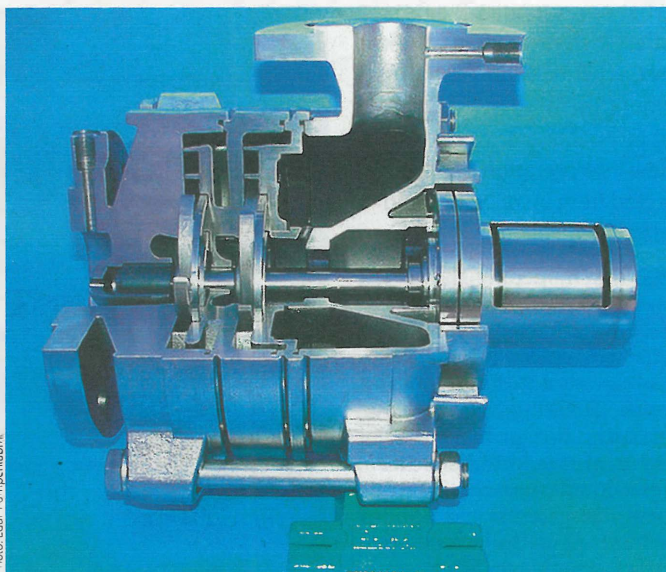


Photo: Edur-Pumpenfabrik

**Magnetically coupled pumps are absolutely free of leaks – this is an absolute requirement with toxic fluids.**

In many cases, this is neither desirable nor permissible. With toxic, environmentally dangerous and explosive fluids in particular, hermetic sealing of shafts is an absolute requirement.

In many cases, the solution is a magnetic coupling, guaranteeing complete leakage security,

zero wear and maintenance, and excellent operational safety. Edur can now also supply its process pumps with magnetic couplings. (hk)

➔ **Edur-Pumpenfabrik Eduard Redlien GmbH & Co. KG,**  
www.edur.com,  
Hall 15, Booth G43